

## CAST IRON SLEEVE PN 10/16



**Size :** DN 40 to DN 200  
**Ends :** Flanges PN10/16 R.F.  
**Min Temperature :** - 10°C  
**Max Temperature :** + 150°C  
**Max Pressure :** 16 Bars  
**Specifications :** Length DIN or NF ( with butterfly valve )  
With drain threaded 1/2" BSP

**Materials :** Cast iron EN GJL-250

## CAST IRON SLEEVE PN 10/16

**SPECIFICATIONS :**

- Length DIN or NF ( with butterfly valve )
- Flanges R.F. PN10/16 up to DN150, PN10 for DN200
- With drain threaded 1/2" BSP
- The whole butterfly valve and sleeve allows to replace gate valve without modification
- Painting color grey RAL 7011 for DIN type Ref.1196 and color blue RAL 5010 for NF type Ref.1195, thickness 70-100µ

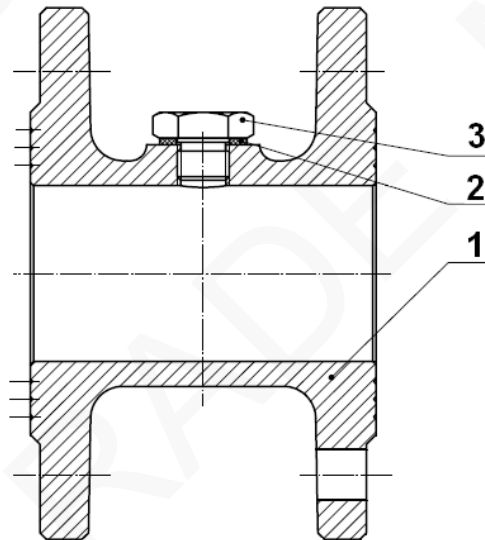
**USE :**

- For all common fluids
- Min Temperature Ts : - 10°C
- Max Temperature Ts :+ 150°C
- Max Pressure Ps : 16 bars

**RANGE :**

- Cast iron flanges R. F. PN10/16 from DN 40 to 150, PN10 for DN200 for length NF 29323 ( EN 558 series 29 ) **Ref.1195**
- Cast iron flanges R. F. PN10/16 from DN 40 to 150, PN10 for DN200 for length DIN 3202 F4 ( EN 558 series 14 ) **Ref.1196**

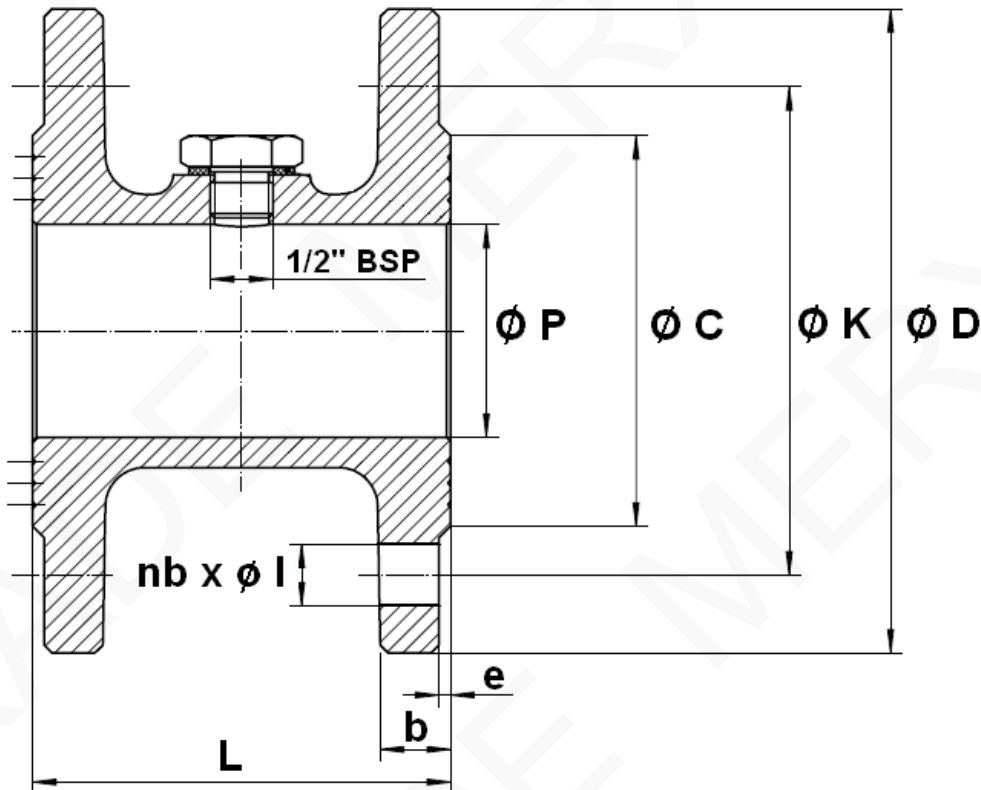
**MATERIALS :**



Item	Designation	Materials
1	Body	Cast iron EN GJL-250
2	Gasket	PTFE
3	Drain	Brass

## CAST IRON SLEEVE PN 10/16

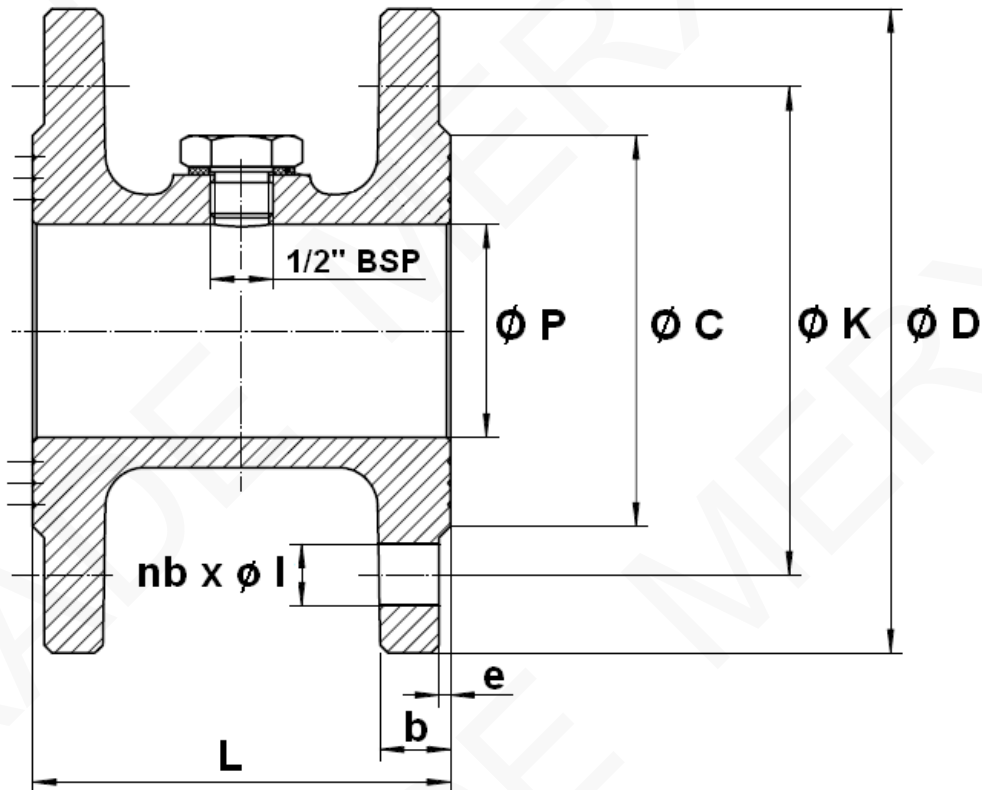
**SIZE FOR LENGTH NF 29323 REF.1195 ( in mm ) :**



Ref.	DN	40	50	65	80	100	125	150	200	
1195	L	103	99	108	114	120	130	144	168	
	$\varnothing P$	42.5	54.5	70.3	82.5	107.1	131.7	159.3	207.3	
	$\varnothing D$	150	165	185	200	220	250	285	340	
	$\varnothing K$	110	125	145	160	180	210	240	295	
	$\varnothing C$	88	100	122	138	159	181	210	266	
	Nb x $\varnothing l$	4 x 19	4 x 19	4 x 19	8 x 19	8 x 19	8 x 19	8 x 19	8 x 23	8 x 23
	e	2	3	3	3	3	3	3.5	3.5	
	b	14	15	15	17	17	20	20	20	
	Weight ( Kg )	4	5.4	6.8	8.2	9.5	14	17.6	25	

## CAST IRON SLEEVE PN 10/16

**SIZE FOR LENGTH DIN 3202 F4 REF.1196 ( in mm ):**



Ref.	DN	40	50	65	80	100	125	150	200	
1196	L	107	107	124	134	138	144	154	170	
	$\varnothing P$	42.5	54.5	70.3	82.5	107.1	131.7	159.3	207.3	
	$\varnothing D$	150	165	185	200	220	250	285	340	
	$\varnothing K$	110	125	145	160	180	210	240	295	
	$\varnothing C$	88	100	122	138	159	181	210	266	
	Nb x $\varnothing I$	4 x 19	4 x 19	4 x 19	8 x 19	8 x 19	8 x 19	8 x 19	8 x 23	8 x 23
	e	2	3	3	3	3	3	3	3.5	3.5
	b	14	15	15	17	17	20	20	20	20
	Weight ( Kg )	4	5.2	7	8.4	10.6	13	17	25	

## CAST IRON SLEEVE PN 10/16

### STANDARDS :

- Fabrication according to ISO 9001 : 2015
- DIRECTIVE 2014/68/EU : Products excluded from directive (Article 4, § 3)
- For length NF 29323 ( EN 558 series 29 ) for **Ref. 1195**
- For length DIN 3202 F4 ( EN 558 series 14 ) for **Ref. 1196**
- Flanges R.F. according to EN 1092-2 PN10/16

### ASSEMBLING EXAMPLE :



**ADVICE :** Our opinion and our advice are not guaranteed and MXT shall not be liable for the consequences of damages. The customer must check the right choice of the products with the real service conditions.